

# 24/00839/S73

Development Site At, Weights Lane, Redditch,  
Worcestershire

Variation of condition 4 of hybrid planning permission  
19/00977/HYB

Substitution of HQI 73 House Type with HQI 50 House  
Type on Plots 80-83 and reorientation of Plots 84-85 in  
order to address gradients onsite.

Recommendation: Minded to GRANT, delegated  
powers

# Approved Framework Plan



# Site Location Plan



# Approved Site Layout under 19/00977/HYB



# Proposed Site Layout (B&W)

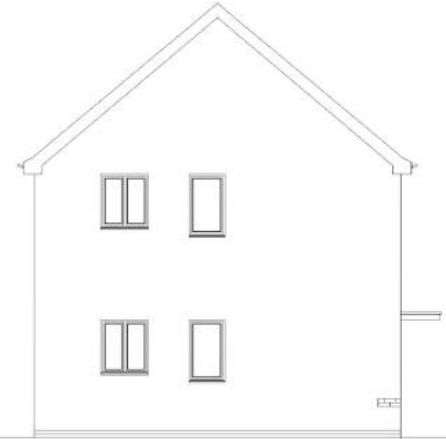




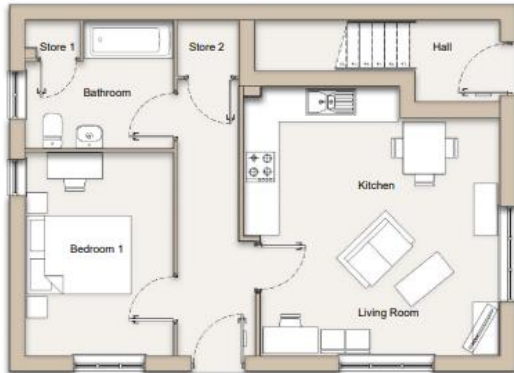
Front Elevation



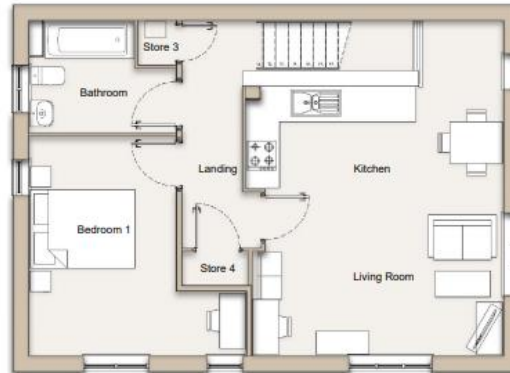
Side Elevation



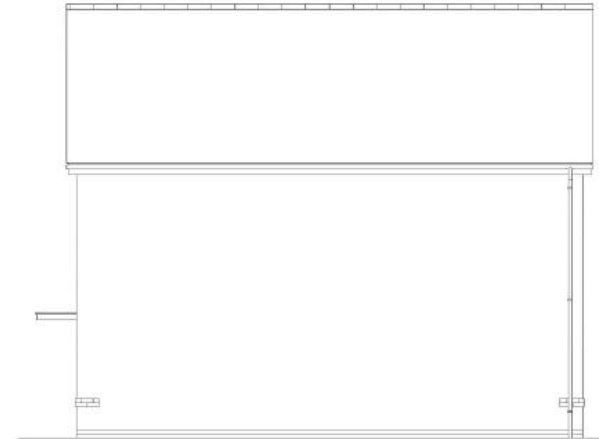
Side Elevation



Ground Floor Plan



First Floor Plan



Rear Elevation

# HQI 50 1 Bedroom Maisonettes

## Social rent